

## ***Didilia* sp. infecting *Phlebotomus stantoni* in Thailand**

Sor-suwan, S.<sup>1</sup>, Jariyapan, N.<sup>1\*</sup>, Mano, C.<sup>1</sup>, Apiwathnasorn, C.<sup>2</sup>, Sriwichai, P.<sup>2</sup>, Samung, Y.<sup>2</sup>, Siriyasatien, P.<sup>3</sup>, Bates, P.A.<sup>4</sup> and Somboon, P.<sup>1\*</sup>

<sup>1</sup>Department of Parasitology, Faculty of Medicine, Chiang Mai University, Chiang Mai, Thailand

<sup>2</sup>Department of Medical Entomology, Faculty of Tropical Medicine, Mahidol University, Bangkok, Thailand

<sup>3</sup>Department of Parasitology, Faculty of Medicine, Chulalongkorn University, Bangkok, Thailand

<sup>4</sup>Division of Biomedical and Life Sciences, Faculty of Health and Medicine, Lancaster University, Lancaster, United Kingdom

\*Corresponding author e-mail: njariyapan@gmail.com and pradya.somboon@cmu.ac.th

Received 20 February 2017; received in revised form 4 May 2017; accepted 7 May 2017

**Abstract.** Nematode infection in wild caught Phlebotomine sand flies was investigated in Thailand. Light microscopy (LM) and scanning electron microscopy (SEM) were used to detect and morphologically characterize entomopathogenic nematodes that presented in the sand flies. *Didilia* sp. nematodes were found for the first time in the body cavity of wild caught male *Phlebotomus stantoni* sand flies. The *Didilia* sp. was identified based on the morphology of the adult nematodes, from their stylet and teeth at the anterior tip, body length, and egg shell sculpture. It was noted that every infected male sand fly had unrotated genitalia, which would not allow them to mate, thus leading to the loss of their offspring. This finding provided information that might lead to study on whether or not the *Didilia* sp. has the potential to control sand fly population.

### INTRODUCTION

Phlebotomine sand flies are responsible for the spread of the medically important *Leishmania* parasites. Several methods for the control of adult sand flies are available, such as residual sprays, space sprays, barrier methods including treated netting/clothing, tropical repellents, and application of specific pesticides in reservoir burrows (reviewed by Claborn, 2010). Extensive work into entomoparasites of phlebotomine sand flies, including protozoa, nematodes, viruses, bacteria, fungi and mites, has been conducted and some of these are described as capable of killing their hosts (review by Warburg *et al.*, 1991).

Entomopathogenic nematodes in the families: 1) Allantonematidae in Colombia (Poinar *et al.*, 1993); 2) Splendidofilariinae in Israel (Bain *et al.*, 1992) and South

Africa (Hering-Hagenbeck *et al.*, 2000); 3) Steinernematidae in Brazil (Secundino *et al.*, 2002) and Turkey (Karakuş *et al.*, 2013); 4) Tylenchidae in Argentina (Fernández *et al.*, 2016), Pakistan (Kakarsulemankhel, 2003; Kakarsulemankhel & Yasinzi, 1999), and India (Srinivasan *et al.*, 1992; Dinesh *et al.*, 2013), and 5) Tetradonematidae in Pakistan (Kakarsulemankhel, 2003), Afghanistan (Killick-Kendrick *et al.*, 1989; Tang *et al.*, 1993; Tang *et al.*, 1997), and Portugal (Pires *et al.*, 1997) have been found in various sand flies, i.e., *P. sergenti*, *P. papatasi*, *P. salehi*, *P. alexandri*, *P. dubosqi*, *P. argentipes*, *P. tobbi*, and *Lutzomyia longipalpis*. To date, no sand fly infected with entomopathogenic nematodes has been reported in Thailand. Therefore, the objective of this study was to investigate for entomopathogenic nematodes in sand flies in Chiang Mai, Thailand.

### Sand fly collections and identification

Sand flies were collected from Chiang Mai, Thailand, from January to August 2016 using five CDC light-traps from 6 pm to 6 am (overnight). Collected sand flies were transferred to the laboratory at the Department of Parasitology, Faculty of Medicine, Chiang Mai University. Sand fly identification was performed using the following keys and articles (Lewis, 1978, 1987).

### Dissection of sand flies and measurement of nematodes

Each collected sand fly was examined for nematodes by dissecting under microscopy. When a nematode was found in the body cavity of a sand fly, the infected fly was opened carefully under a dissecting microscope. Then, the nematodes were observed under a light microscope and photographed using an OLYMPUS microscopy camera using DP2-SAL Firmware Ver.3.3.1.198 (Tokyo, Japan). Measurements were performed using ImageJ 1.46r software (Maryland, USA).

### Scanning electron microscopy

SEM was used to observe the morphology of the nematodes from the sand flies. The nematodes were fixed in 2.5% glutaraldehyde solution, left overnight at 4°C and washed twice for 10 min in PBS (pH 7.2) on the following day. Thereafter, they were post fixed for 1 h with 1% osmium tetroxide in PBS, dehydrated in increasing grades of ethanol, and dried to critical point. The nematodes were glued to an SEM stub and coated with a 20-nm thick gold layer before being observed with a Zeiss DSM640 scanning electron microscope (Oberkochen, Germany).

### Nematode identification

Nematodes were identified by comparing the body size, egg diameter, and morphological characteristics with those in previous studies of the Tetradonematid nematodes (Killick-Kendrick *et al.*, 1989; Tang *et al.*, 1993; Tang *et al.*, 1997).

Eight *P. stantoni* males out of 661 collected sandflies (mixed gender and species) were found infected with a nematode. Male *P. stantoni* had a cibarium with spicules, spines on the pharynx, and palp extending further than antenna 3 (data not shown). The morphological characteristic of the male *P. stantoni* genitalia is shown in Figure 1. Figure 1a shows a genital pump and an ejaculatory duct. The genitalia of the male had two styles, with each having four long spines of which one is terminal, one subterminal, and two were near the middle. The male also had a trilobed paramere and the accessory spine of the aedeagus, was longer than the aedeagus (Fig. 1b).

Figures 2a and b show normal genitalia and un-rotated genitalia of the male *P. stantoni* sand flies, respectively. One gravid female nematode was observed in the body cavity of each infected male sand fly, all of which had un-rotated genitalia (Fig. 2b). Light microscopic analysis revealed that nematodes were filled entirely with round, light brown eggs with a sculptured surface (Fig. 2c and d). A comparison of body size and egg diameter of the nematodes to *Didilia ooglypta* in the previous work of Tang *et al.* (1993) is shown in Table 1. The SEM results showed spherical or oval shaped eggs with a thick shell and surface pattern divided into hexagonal plates (Fig. 2e and f). The position of the stylet was found at the anterior tip with a tooth opposite the stylet (Fig. 2g and h). According to their morphology, body size and egg diameter, the nematodes were identified as *Didilia* species.

### DISCUSSION

In this study, male *P. stantoni* sand flies were found to be infected with nematodes. The mean egg diameter and the body width of the nematodes were similar to those found in previous studies of *D. ooglypta* from Afghanistan and Portugal (Tang *et al.*, 1993; Pires *et al.*, 1997) but their body length was shorter. Because of their short body length

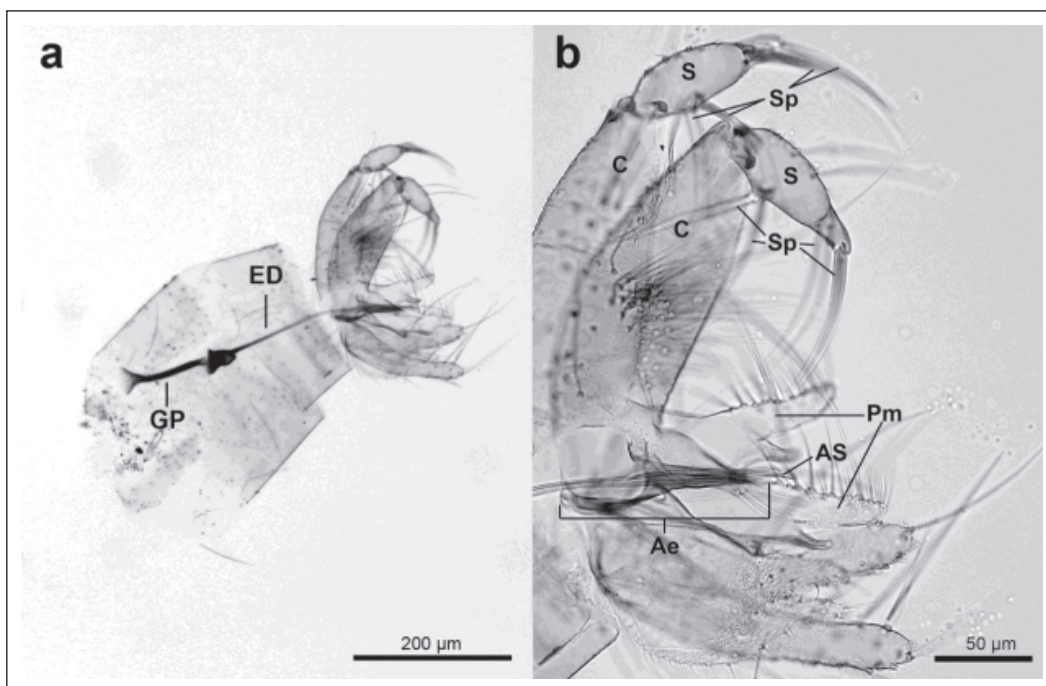


Figure 1. Light microscope image of male genitalia of *Phlebotomus stantoni*. (a) Male genitalia with genital pump (GP) and ejaculatory duct (ED). (b) High magnification of aedeagus (Ae), accessory spine of aedeagus (AS), coxite (C), paramere (Pm), style (S), and spine of style (Sp).

it suggests that these nematodes were not *D. ooglypta*. However, due to the similarity in ultrastructural morphology of their eggs, teeth, and stylets compared with *D. ooglypta*, they were identified as *Didilia* species.

The Tetradonematidae nematode, *Didilia* sp., was found in Chiang Mai, Thailand for the first time whereas the Steinernematidae nematodes, *Steinernema khoisanae*, *Steinernema websteri* (Thanwisai *et al.*, 2012), *Steinernema minutum* (Maneesakorn *et al.*, 2010), *Steinernema siamkayi* (Stock *et al.*, 1998), and other *Steinernema* spp. have been reported in wax moths and Japanese beetles in Thailand (Tangchitsomkid & Sontirat, 1998; Noosidum *et al.*, 2010; Vitta *et al.*, 2015). Tang *et al.* (1997) have described the life cycle of *D. ooglypta*. Briefly, *D. ooglypta* eggs are ingested by first instar sand fly larvae. Female and male nematodes develop inside the larvae. The sex organs of both females and males are seen on day 20 of infection, they then mate. After mating, males die in 2 days. In the meantime, the sand fly larvae

develop into the fourth stage. 37 days after infection the female nematodes are fully mature with fertilized eggs in the uterus. By the time the adult flies emerge from pupae the gravid nematodes use their teeth and stylet to break through the intersegmental membranes of the infected fly and bore a hole through the cuticle of the abdomen of the adult flies to expose the vulva and lay eggs. The gravid female nematodes affect the development of reproductive organs, delay preimaginal stages, and reduce the life span of the infected sand flies when compared with uninfected flies. Un-rotated genitalia of infected male of *P. papatasi* were observed (Tang *et al.*, 1997).

Our study revealed that the genitalia of the infected *P. stantoni* were also un-rotated. Therefore, male infected sandflies are likely to be unable to mate because of their un-rotated genitalia. Most infected flies survive approximately 6 to 8 days after the nematodes laid eggs and the infected flies emerge approximately 18 to 20 days later than uninfected ones (Tang *et al.*, 1997). The

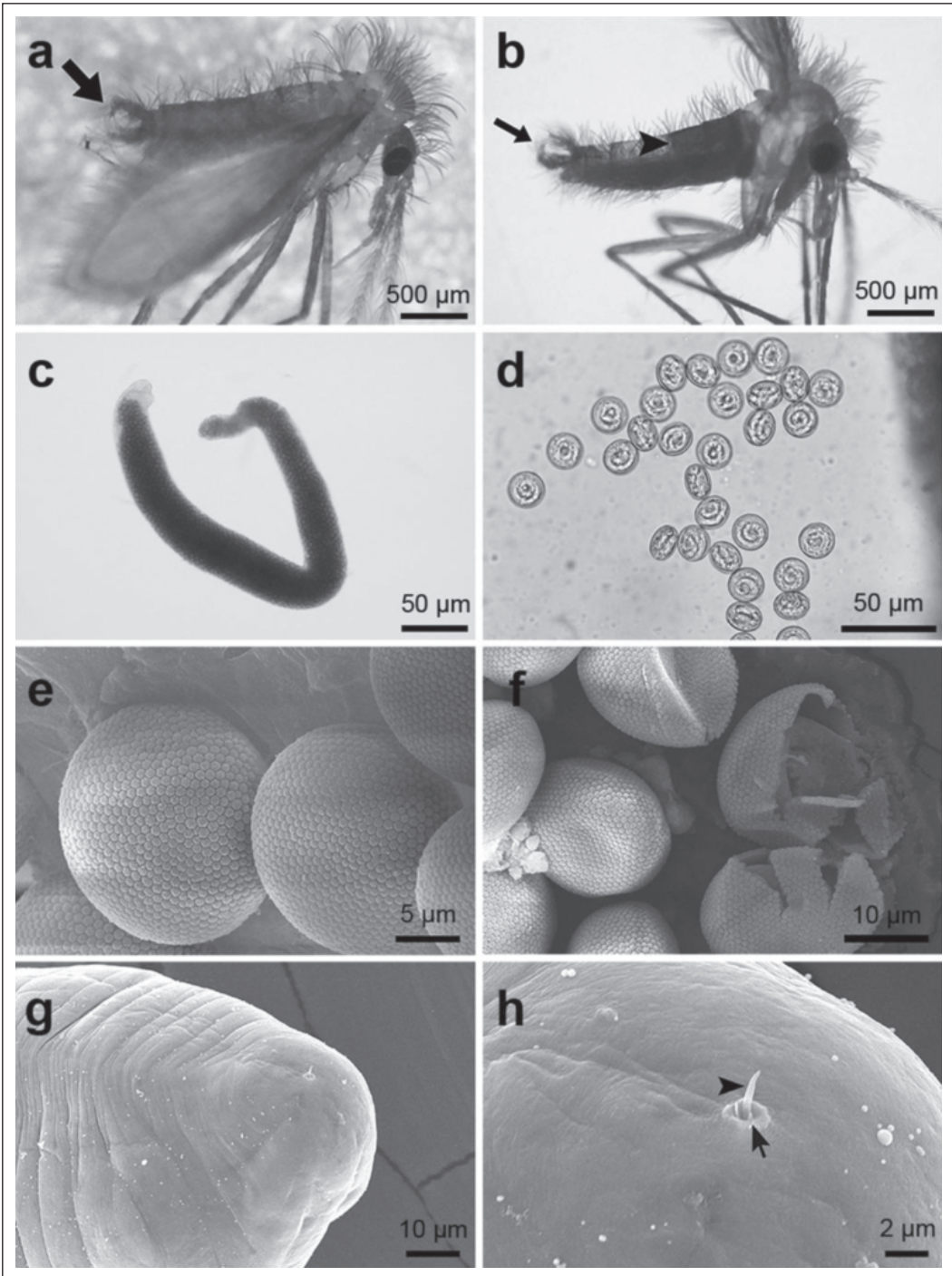


Figure 2. Female nematodes found in male *Phlebotomus stantoni* collected in Chiang Mai, Thailand in 2016. (a) Arrow indicates normal genitalia of male. (b) Arrow indicates un-rotated genitalia of male and arrowhead indicates gravid female nematode in sand fly. (c) A gravid female nematode from the body cavity of sand fly. (d) Eggs of nematode in PBS. (e) SEM of eggs of nematode. (f) SEM of incomplete eggs inside the nematode. (g) Anterior tip of female nematode showing stylet (h). Stylet (arrowhead) and teeth (arrow) at anterior tip of nematode.



Table 1. Comparison of body size and egg diameter of nematodes collected in Chiang Mai, Thailand and *D. oogypta* from Afghanistan (Tang *et al.*,1993)

Nematode	Body length (µm)	Body width (µm)	Egg diameter (µm)
Chiang Mai 2016	1794.31 ± 30 (N=8)	148.15 ±10 (N=8)	20.63 ± 5 (N=30)
<i>Didilia oogypta</i>	3113 ± 361 (N=17)	141 ± 16.4 (N=17)	27.70 ± 1.5 (N=17)

delay of sand fly development might be of benefit in controlling sand flies because when nematodes oviposit, it would be the same time that the first instar larvae of uninfected sand flies in the same generation are ready to ingest the nematode eggs. Thus, this would increase infection in the sand flies. The eggs also survive for two and a half years in humid larval feces, but almost always die within two weeks in water (Tang *et al.*, 1997). Based on this information, further study on the potential of *Didilia* sp. for use in the control of phlebotomine sand fly populations should be considered.

In conclusion, male *P. stantoni* infected with nematodes were found for the first time. Based on the results of comparison of body size, pattern of egg cases and the position of stylets and teeth of the nematode to previous publication, the nematodes were identified as *Didilia* species. It is likely that *Didilia* sp. will affect the development of the genitalia of *P. stantoni* and therefore, infected male sand flies may be unable to mate because of their unrotated genitalia. These findings provide information and justification for further studies in using *Didilia* sp. to control sand flies and hence limit or decrease the spread of *Leishmanias*.

**Acknowledgements.** This study was supported by a Diamond Research Grant of the Faculty of Medicine, Chiang Mai University to Pradya Somboon. In addition we acknowledge the Research Administration Office of Chiang Mai University which provided the budget for our Excellence Center in Insect Vector Study. The work was

partially funded by the Korean International Cooperation for Infectious Diseases (KOICID). We thank Chiang Mai University for the award of the Post-Doctoral Fellowship 2016 to Pradya Somboon and Sriwatrapron Sor-suwan and the Newton Fund-TRF Travel Grant to PhD Supervisor Year 2014/15 to Narissara Jariyapan.

#### Conflict of Interest

The authors declare that they have no conflict of interest.

#### REFERENCES

- Bain, O., Petit, G., Paperna, I., Finkelman, S. & Killick-Kendrick, M. (1992). A new filarial worm of lizard transmitted by sandflies. *Memórias do Instituto Oswaldo Cruz* **87**: 21-29.
- Claborn, D.M. (2010). The biology and control of leishmaniasis vectors. *Journal of Global Infectious Diseases* **2**: 127-134.
- Dinesh, D.S., Kumar, V. & Das, P. (2013). Infestation of nematodes in *Phlebotomus argentipes* Annandale and Brunetti (Diptera: Psychodidae), Bihar, India. *Global Journal of Medical Research* **13**: 7-9.
- Fernández, M.S., Santini, M.S., Diaz, J.I., Villarquide, L., Lestani, E., Solommon, O.D. & Achinelly, M. (2016). Parasitism by Tylenchid Nematodes in natural populations of *Pintomyia fischeri* (Diptera: Psychodidae: Phlebotominae) in Argentina. *SM Tropical Medicine Journal* **1**: 1001.

- Hering-Hagenbeck, S., Boomker, J., Petit, G., Killick-Kendrick, M. & Bain, O. (2000). Description of *Madathamugadia hiepei* n. sp. (nematoda: Splendidofilariinae), a parasite of a South African gecko, and its development in laboratory bred *Phlebotomus dubosqi* (Diptera: Psychodidae). *Systematic Parasitology*, **47**: 207-213.
- Kakarsulemankhel, J.K. & Yasinzi, M.M. (1999). Preliminary observations on entomopathogens of phlebotomine sandflies in Pakistan. *Parassitologia* **41**: 613.
- Kakarsulemankhel, J.K. (2003). Preliminary observations on nematode parasites of phlebotomine sandflies in Pakistan. Communication II. *Journal of Invertebrate Pathology* **84**: 63-65.
- Karakuş, M., Arserim, S.K., Töz, S.Ö. & Özbel, Y. (2013). [Detection of entomopathogen nematode [EPN - sand flies (*Phlebotomus tobbi*)] caught in the wild in Aydın, Kuşadası town and its assessment as a biological control agent]. *Türkiye Parazitoloji Dergisi* **37**: 36-39.
- Killick-Kendrick, R., Killick-Kendrick, M., Qala, N.A., Nawi, R.W., Ashford, R.W. & Tang, Y. (1989). Preliminary observations on a Tetradonematid nematode of Phlebotomine sandflies of Afghanistan. *Annales De Parasitologie Humaine Et Comparee* **64**: 332-339.
- Lewis, D.J. (1978). The Phlebotomine sandflies (Diptera: Psychodidae) of the Oriental Region. *Bulletin of the British Museum (Natural History) Entomology* **37**: 217-343.
- Lewis, D.J. (1987). Phlebotomine sandflies (Diptera: Psychodidae) from the Oriental Region. *Systematic Entomology* **12**: 163-180.
- Maneesakorn, P., An, R., Grewal, P.S. & Chandrapatya, A. (2010). Virulence of four new strains of entomopathogenic nematodes from Thailand against second instar larva of the Japanese Beetle, *Popillia japonica* (Coleoptera: Scarabaeidae). *Thai Journal of Agricultural Science* **43**: 61-66.
- Noosidum, A., Hodson, A.K., Lewis, E.E. & Chandrapatya, A. (2010). Characterization of new entomopathogenic nematodes from Thailand: foraging behavior and virulence to the greater wax moth, *Galleria mellonella* L. (Lepidoptera: Pyralidae). *Journal of Nematology* **42**: 281-291.
- Pires, C.A., Tang, Y. & Killick-Kendrick, R. (1997). *Didilia* sp. (Tetradonematidae: Mermithoidea: Nematoda) a parasite of *Phlebotomus sergenti* in Portugal. *Parasite* **4**: 191-192.
- Poinar, G.O., Ferro, C., Morales, A. & Tesh, R.B. (1993). *Anandranema phlebotophaga* n. gen., n. sp. (Allantonematidae: tylenchida), a new nematode parasite of phlebotomine sand flies (Psychodidae: Diptera) with notes on experimental infections of these insects with parasitic rhabditoids. *Fundamental and Applied Nematology* **16**: 11-16.
- Secundino, N.F., Araújo, M.S., Oliveira, G.H., Massara, C.L., Carvalho, O.S., Lanfredi, R.M. & Pimenta, P.F. (2002). Preliminary description of a new entomoparasitic nematode infecting *Lutzomyia longipalpis* sand fly, the vector of visceral leishmaniasis in the New World. *Journal of Invertebrate Pathology* **80**: 35-40.
- Srinivasan, R., Panicker, K.N. & Dhanda, V. (1992). Occurrence of entomophilic nematode infestation among phlebotomid sandfly, *Phlebotomus papatasi* – a preliminary report. *Journal of Communicable Diseases* **24**: 8-11.
- Stock, S.P., Somsook, V. & Reid, A.P. (1998). *Steinernema siamkayai* n. sp. (Rhabditida: Steinernematidae), an entomopathogenic nematode from Thailand. *Systematic Parasitology* **41**: 105-113.
- Tang, Y., Hominick, W.M., Killick-Kendrick, R., Killick-Kendrick, M. & Page, A.M. (1993). *Didilia ooglypta* n. gen., n. sp. (Tetradonematidae: Mermithoidea: Nematoda), a parasite of phlebotomine sandflies in Afghanistan. *Fundamental and Applied Nematology* **16**: 325-331.

- Tang, Y., Killick-Kendrick, R. & Hominick, W.M. (1997). Life cycle of *Didilia ooglypta* (Nematoda: Tetradenematidae), a parasite of phlebotomine sandflies of Afghanistan. *Nematologica* **43**: 491-503.
- Tangchitsomkid, N. & Sontirat, S. (1998). Occurrence of entomopathogenic nematodes in Thailand. *Kasetsart Journal Natural Science* **32**: 347-354.
- Thanwisai, A., Tandhavanant, S., Saiprom, N., Waterfield, N.R., Ke Long, P., Bode, H.B., Peacock, S.J. & Chantratita, N. (2012). Diversity of *Xenorhabdus* and *Photorhabdus* spp. and their symbiotic entomopathogenic nematodes from Thailand. *PLoS One*, **7**: e43835.
- Vitta, A., Yimthin, T., Fukruksa, C., Wongpeera, W., Yotpanya, W., Polseela, R. & Thanwisai, A. (2015). Distribution of entomopathogenic nematodes in lower northern Thailand. *Southeast Asian Journal of Tropical Medicine and Public Health* **46**: 564-573.
- Warburg, A., Ostrovska, K. & Lawyer, P.G. (1991). Pathogens of phlebotomine sandflies: a review. *Parassitologia* **33**: 519-526.